



KINGSTON

Manufacturing reliable industrial valves for industry since 1908.

205

Check Valve

Model 205

Brass Horizontal Anti-Hammering Check Valve



Features

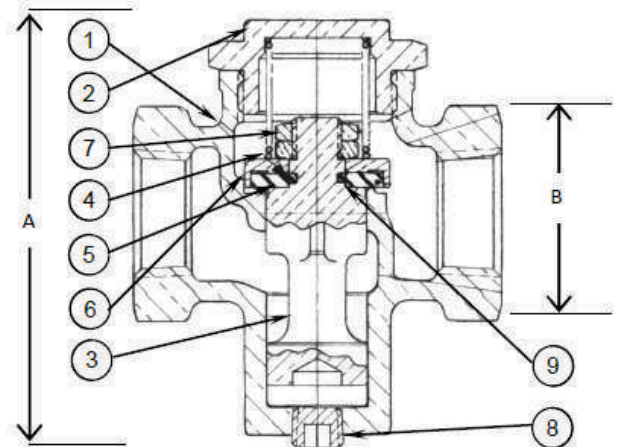
- Dash-Pot Design (to reduce hammering effect caused by exhaust pulsation found in piston-type air compressors and compressed air dryers.
- Lubricated Compressed Air Applications
- Design Allows for Easy Removal of Scale and Rust Debris
- Maximum Operating Pressure is 400 PSIG
- Temperature Range is -250 °F to 350 °F
- Available Sizes: 3/8" NPT to 2" NPT
- 1/8" Unloader Port Plugged
- Stainless Steel Spring

Model	Inlet Size	Outlet Size	Cracking Pressure (PSI)	Dimensions (inches)		Approx. Ship Wt.	Min. Temp (°F)	Max. Temp (°F)
				Height (A)	Hex (B)			
205-3	3/8" NPT	3/8" NPT	3.0	2-1/8"	1"	12 oz.	-250 °F	400 °F
205-4	1/2" NPT	1/2" NPT	3	3-1/8"	1-13/16"	1 lb. 3 oz.		
205-5	3/4" NPT	3/4" NPT	1	3-7/8"	1-9/16"	2 lb.		
205-6	1" NPT	1" NPT	1	4-3/16"	1-7/8"	3 lb. 6 oz.		
205-7	1-1/4" NPT	1-1/4" NPT	1.5	4-15/16"	2-5/16"	5 lb.		
205-8	1-1/2" NPT	1-1/2" NPT	1	4-15/16"	2-5/16"	4 lb. 9 oz.		
205A-9	2" NPT	2" NPT	1	5"	3-3/32"	7 lb. 4 oz.		

Materials

No.	Part Name	Materials
1	Body Cast	Brass*
2	Cap	Brass
3	Plunger Cast	Brass*
4	Spring	Stainless Steel
5	Disc	Teflon
6	Cage (Disc)	Brass
7	Locknut	Brass
8	Pipe Plug	Steel
9	"O"-Ring	Viton

*Body and plunger machined from cast brass meeting UNS C83600 or C84400



Kingston Model 205 Horizontal Check Valve

Flow Capacity Information

Fig. 205 - 3/8"

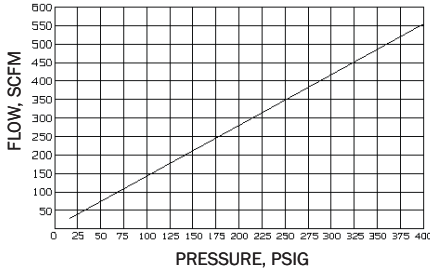


Fig. 205 - 1/2"

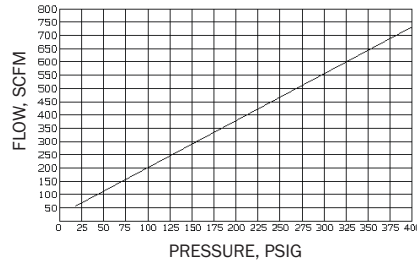


Fig. 205 - 3/4"

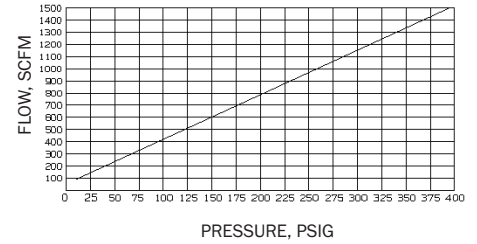


Fig. 205 - 1"

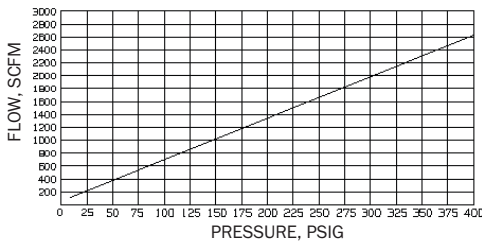


Fig. 205 - 1-1/4"

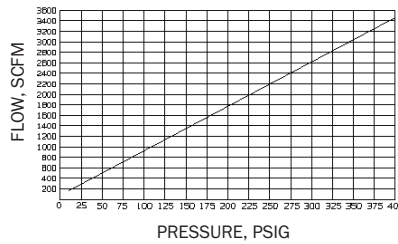
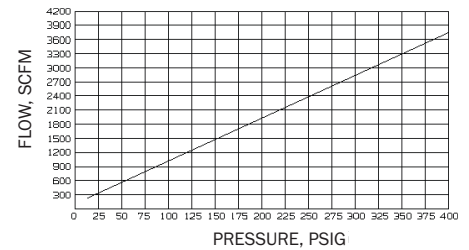


Fig. 205 - 1-1/2"



Ordering Information

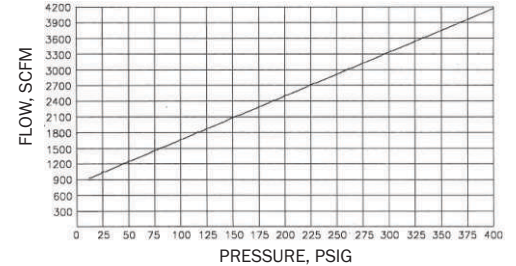
Kingston Horizontal Check Valves Part Number Codes



Valve Model
- 205

Size
3= 3/8" NPT
4= 1/2" NPT
5= 3/4" NPT
6= 1" NPT
7= 1-1/4" NPT
8= 1-1/2" NPT
9= 2" NPT

Fig. 205 - 2"



Product Notes

Storm Manufacturing Group, Inc. reserves all rights. Product specifications and designs are subject to change without notice.

The information contained herein by Storm Manufacturing Group (SMG) is provided in good faith and as a product guide only. Further, SMG makes no representation as to the completeness or accuracy of the information contained herein. Any person or persons using the information contained herein must exercise their own judgement and consider all local, regional, national and global safety standards in evaluating valve selection options. Final application design and integration of Kingston Products are the sole responsibility of the end user.



www.KingstonValves.com
KINGSTON