

# KPU

## Kingston Piloted Unloader Valve

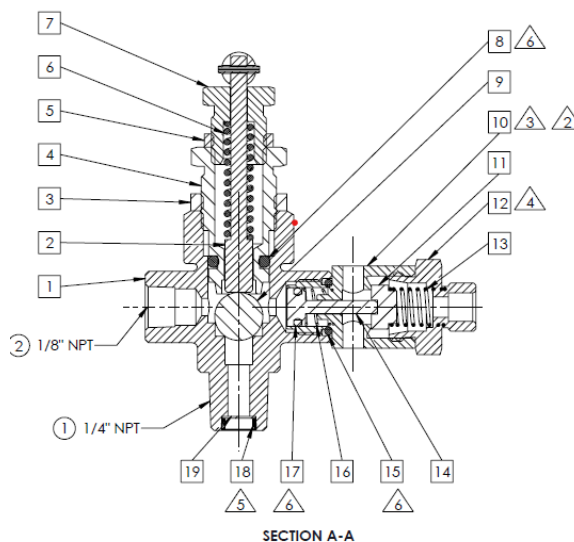


## FEATURES

- Combination of a pilot valve and discharge/unloader valve
- Allows for continuous operation (constant run)
- Most commonly used on gasoline driven air compressors
- 20 scfm flow capability
- Unloader valve vents excess air from the compressor to atmosphere at unload pressure
- Factory set load/unload set pressures 20 - 250 psi with 20 - 30 psi differentials as most common
- Maximum operating temperature 400°F
- Available with dual control feature for electric applications
- Contact factory for other configuration options

## MATERIALS

NO.	PART NAME	MATERIALS	NO.	PART NAME	MATERIALS
1	Body	Forging Brass	12	Muffler Attachment	Brass
2	Stem	Brass	13	Spring	SST
3	Lock Nut	Brass	14	Plunger	Brass
4	Differential Adj Screw	Brass	15	O-Ring	Viton
5	Lock Nut	Brass	16	Spring	SST
6	Spring	SST	17	O-Ring	Viton
7	ADJ Screw, Fine	Brass	18	Retaining Ring	Brass
8	O-Ring	Viton	19	SST Screen	SST
9	SST Ball	SST	20	Toggle	Aluminum
10	Muffler Body	Brass	21	Roll Pin	Steel
11	Teflon Disc	PTFE			



## HOW TO ORDER

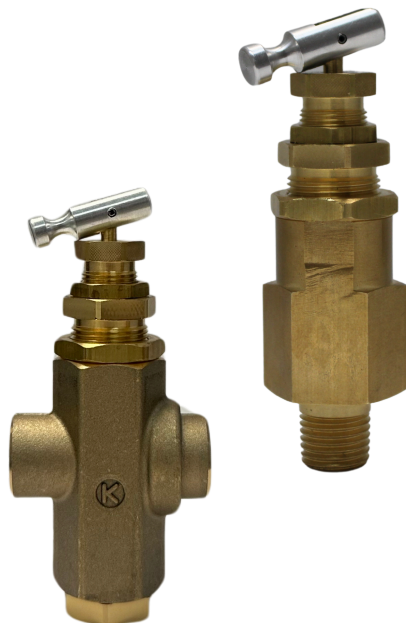
KPU	-	UNLOADER INLET	-	SIGNAL INLET	-	MUFFLER OPTION	-	UNLOAD FEATURE	-	PRESSURE SETTING
		2C (1/4" Compression)		2 (1/4" Male NPT)		(Blank)		T (toggle)		ex:
		2F (1/4" Female NPT)				M (muffler)		DC (dual control)		95 - 125

Example Part Number: KPU-2C-2-M-T-95-125

Max 250 psi  
20-30 psi differential

# KPV

## Kingston Pilot Valve

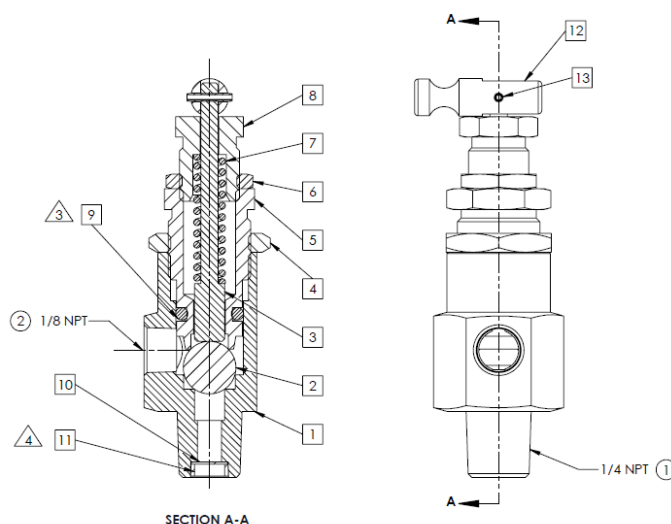


## FEATURES

- Most commonly used on gasoline driven air compressors
- Allows for constant run application
- Actuates throttle control (to speed up or idle down an engine) and/or discharge valve (to rid air from head of compressor at idle)
- Set pressure range is factory set with minimum 20 psi and maximum 250 psi; a 20-30 psi differential is recommended)
- Common load/unload pressures:
  - 95-125 psi, 125-150 psi, 145-175 psi
- Field adjustable
- Toggle allows for manual unloading
- Max temperature 400°F
- Removable filter
- Available with dual control feature for electric applications
- Female inlet available

## MATERIALS

NO.	PART NAME	MATERIALS
1	Body, Hex	Brass
2	SST Ball	SST
3	Stem	Brass
4	Lock Nut	Brass
5	Differential Adj Screw	Brass
6	Lock Nut	Brass
7	Spring	SST
8	ADJ Screw, Fine	Brass
9	O-Ring	Viton
10	SST Screen	SST
11	Retaining Ring	Brass
12	Toggle	Aluminum
13	Roll Pin	Steel



## HOW TO ORDER

KPV	-	SIGNAL INLET	-	UNLOAD FEATURE	-	MOUNTING OPTION	PRESSURE SETTING
		2 (1/4" Male NPT)		T (toggle)		(Blank)	ex:
		2F (1/4" Female NPT)		DC (dual control)		MB (mounting boss)	95 - 125

Example Part Number: KPV-2-T-145-175

Max 250 psi  
20-30 psi differential