

Kingston Model 103SS

Side Relief Outlet Valve



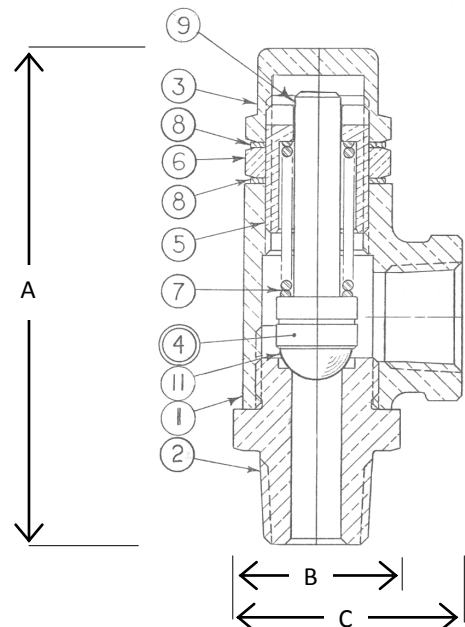
Features:

- Precision machined C360 brass inlet
- Cast C844 Red Brass body
- Hard seat, 440C stainless steel ball
- Stainless steel spring
- NPT Side Outlet for direct connection
- Liquid and non-code air applications
- Maximum temperature 250°F
- Sizes: 1/4 NPT & 3/8 NPT
- Set pressure range 5-500 PSIG
- Every valve factory set and tested

Model	Sizes: inlet/Side	Orifice	Figure/Part No	Dimensions (inches)			Set Pressure Range PSIG	Approximate Ship Weight	Max Temp
				Height (A)	Hex (B)	Width (C)			
103SS	1/4 NPT	.250	103SS-2-000	3	3/4	1 1/4	5-500	5 oz	250°F
	3/8 NPT	.302	103SS-3-000	3	7/8	1 3/8		7 oz.	

Materials

No.	Part Name	Materials
1	Body	Cast Red Brass
2	Base	Brass
3	Cap	Brass
4	Stem Assembly	Stem, Ball
5	Adjusting Screw	Brass
6	Lock Nut	Brass
7	Spring	Stainless Steel
8	Gasket	Teflon
9	Stem	Brass
11	Ball	Stainless Steel



www.KingstonValves.com

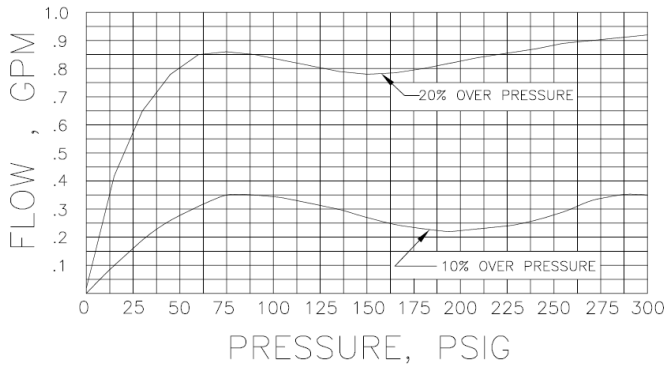
Storm Manufacturing Group
 23201 Normandie Ave., Torrance CA 90501-5050
 Toll Free: 866-628-8287 Fax: 800-997-0500 Direct: 310-326-8287

Copyright 2010 © Storm Manufacturing Group. All rights reserved. Product designs and specifications subject to change without notice. r.10b

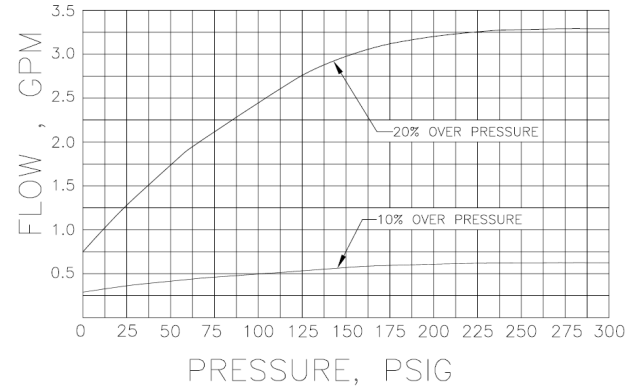
Kingston Model 103SS Side Outlet Relief Valve

Flow Capacity Information

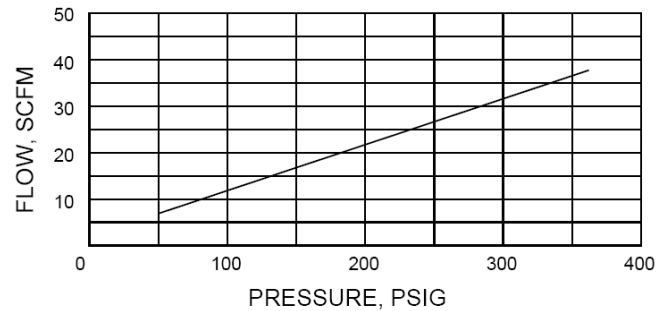
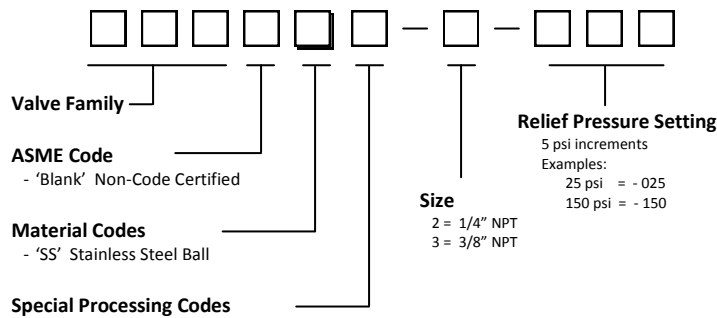
Model 103SS-2 Flow Capacity



Model 103SS-3 Flow Capacity



Ordering Information



Product Notes

All Kingston Safety Valves are manufactured under a quality control system accepted by the National Board of Boiler and Pressure Vessel Inspectors.

Code valves are capacity certified by the National Board, manufactured in accordance with ASME Code, set and sealed at the factory.

Set pressure can deviate from the marked by ± 2 psig at or below 70 psig set pressures and $\pm 3\%$ psig above 70 psig.

Factory standard seat tightness for hard seat valves: no audible leakage at 20% below nameplate set. It is normal for spring-operated safety valves to exhibit leakage or simmer/warn, as the system operating pressure approaches the set pressure. For hard seat valves this typically occurs at pressures at or above 80% of nameplate set pressure.

At very low set pressures (20 psi and below), the ratio of the downward spring force as compared to the upward pressure force is very small. In these cases it may be impossible to achieve seat tightness.

Soft seat valves will typically provide a higher degree of seat tightness than metal, hard seats. Factory standard seat tightness does not ensure bubble-tight seal regardless of material.

Final application design and integration of Kingston Products are the sole responsibility of the end user.

Storm Manufacturing reserves all rights. Product specifications and designs are subject to change without notice.



Storm Manufacturing Group

23201 Normandie Ave., Torrance CA 90501-5050

Toll Free: 866-628-8287 Fax: 800-997-0500 Direct: 310-326-8287

Copyright 2010 © Storm Manufacturing Group. All rights reserved. Product designs and specifications subject to change without notice. r.10b